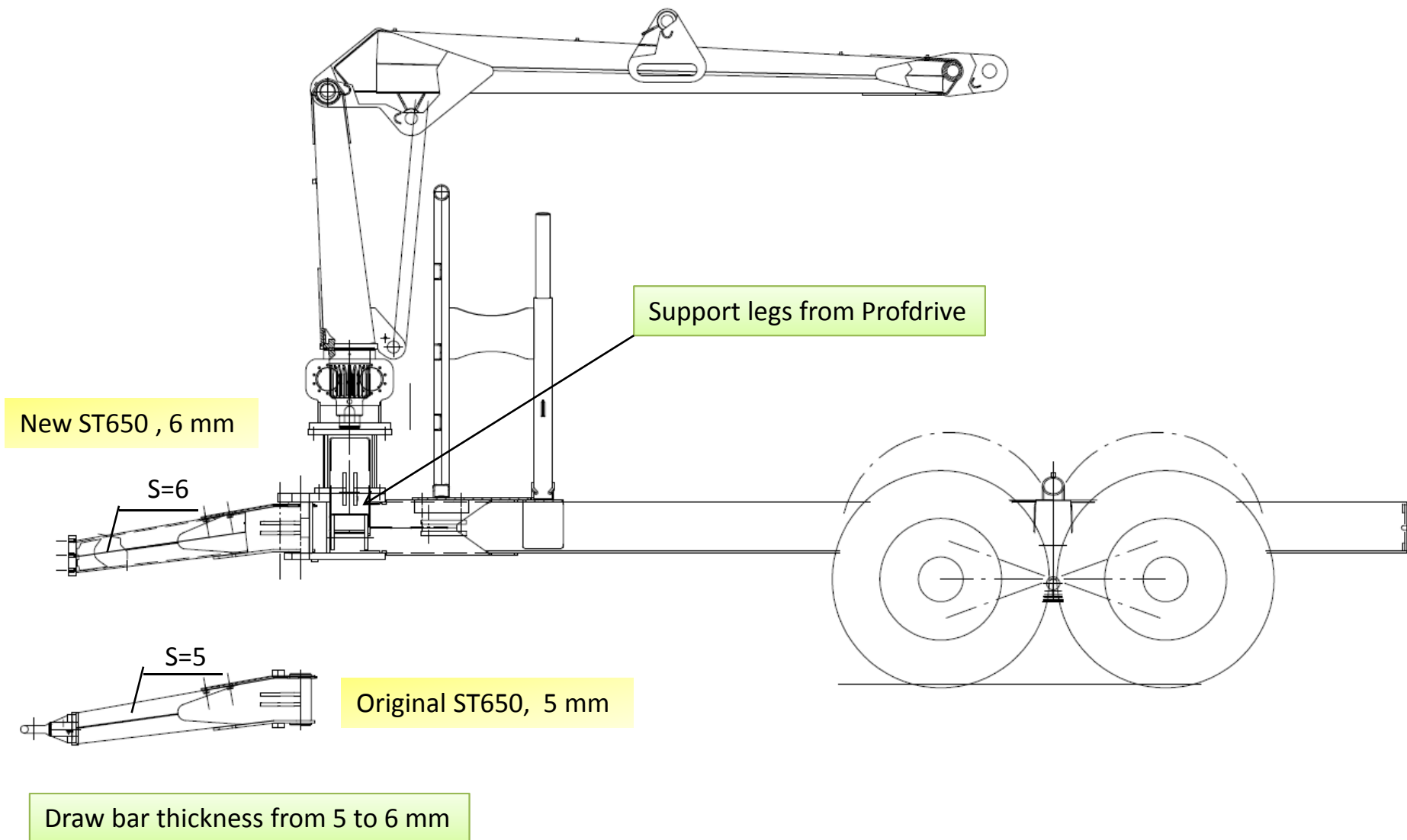
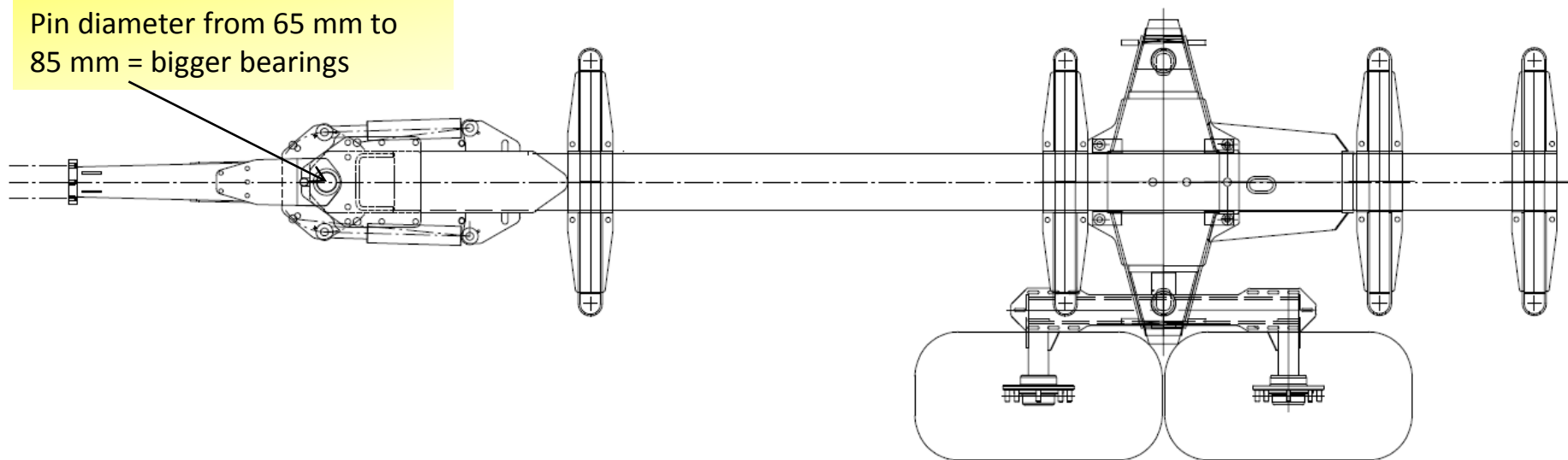


FARMI VARIO121-80. Changes comparing today's VARIO 121



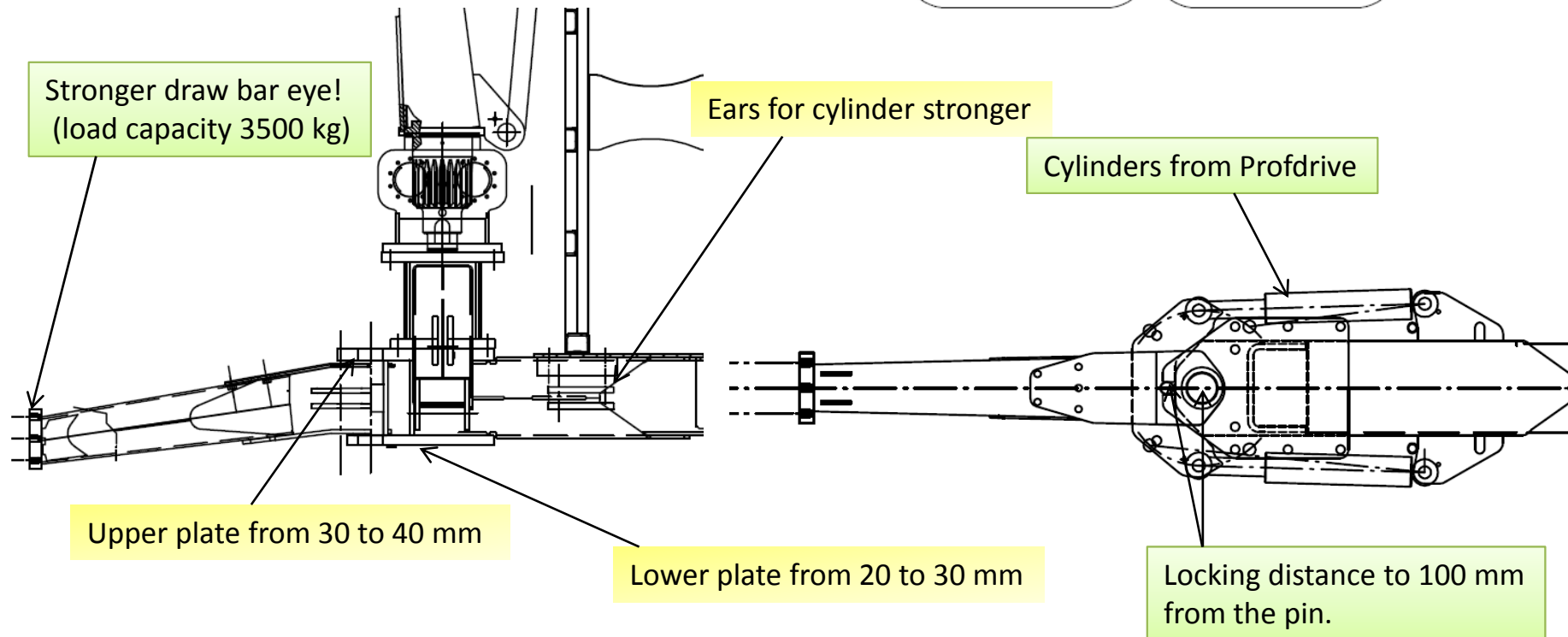
Pin diameter from 65 mm to 85 mm = bigger bearings



Stronger draw bar eye!
(load capacity 3500 kg)

Ears for cylinder stronger

Cylinders from Profdrive



Upper plate from 30 to 40 mm

Lower plate from 20 to 30 mm

Locking distance to 100 mm
from the pin.